



FBE

Radial fan with high overall efficiency





Radial fan with high overall efficiency

FUMEX FBE - an energy-efficient fan designed for industrial environments which can be installed both indoors and outdoors. For expelling non-explosive gases, fumes and lighter particles with an airflow of up to 15000 m³/h (4160 l/s). The impeller has curved blades and is made from welded galvanised sheet metal.

The fan complies with the ErP Directive and is optimised for use in conjunction with the Fumex fume extraction and automatic control range. A number of accessories are available for the FBE series, designed to make installation and use easier and more efficient.

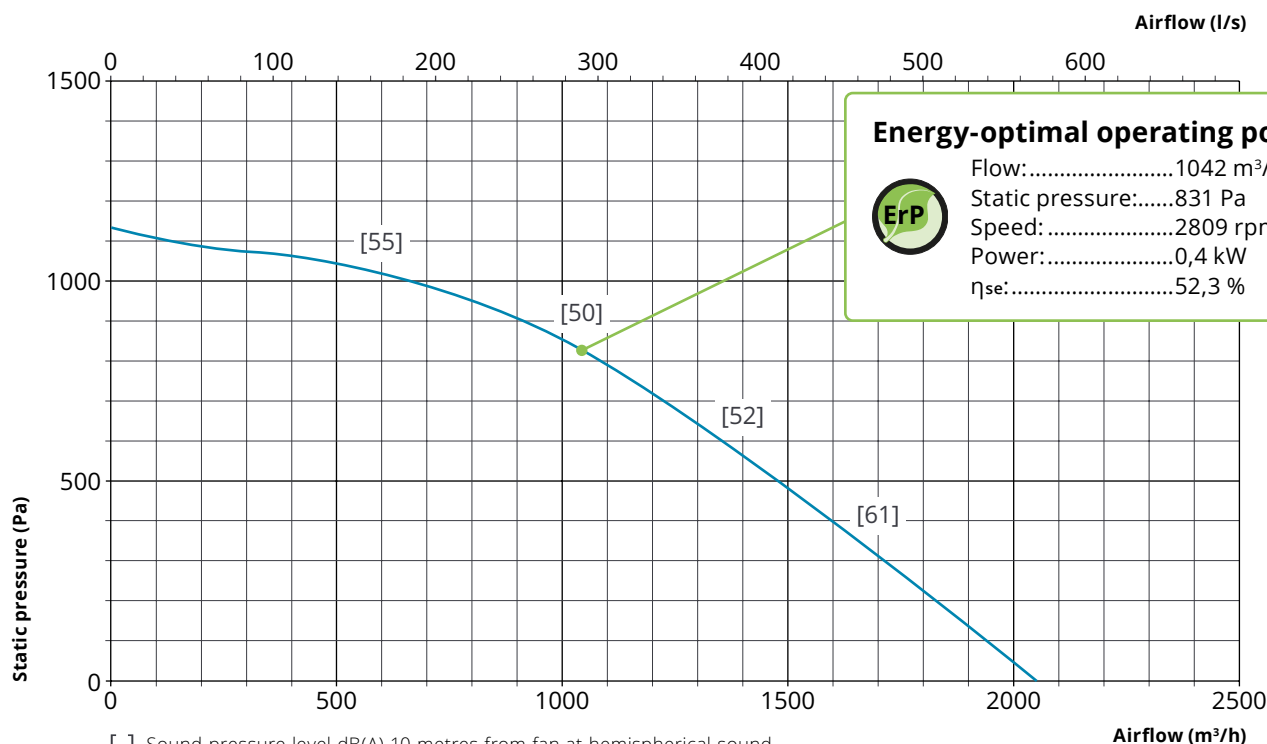
Version



FBE 037

Technical data (1-phase/3-phase)

Weight:	23 kg	Speed:	2755 rpm
Voltage:	230 V 1N~/230 V 3~/400 V 3~	Enclosure class:	IP55
Frequency:.....	50 Hz	Max. operating temperature:..	80 °C
Power:	0,37 kW	Ambient temperature:.....	-20 °C to +40 °C
Rated current: 2,9/1,7/0,96 A		Sound pressure level*:	70 dB(A)





FBE 075

Technical data (1-phase/3-phase)

Weight: 30 kg

Voltage: 230 V 1N~/230 V 3~/400 V 3~

Frequency:..... 50 Hz

Power: 0,75 kW

Rated current: 5,8/3,3/1,9 A

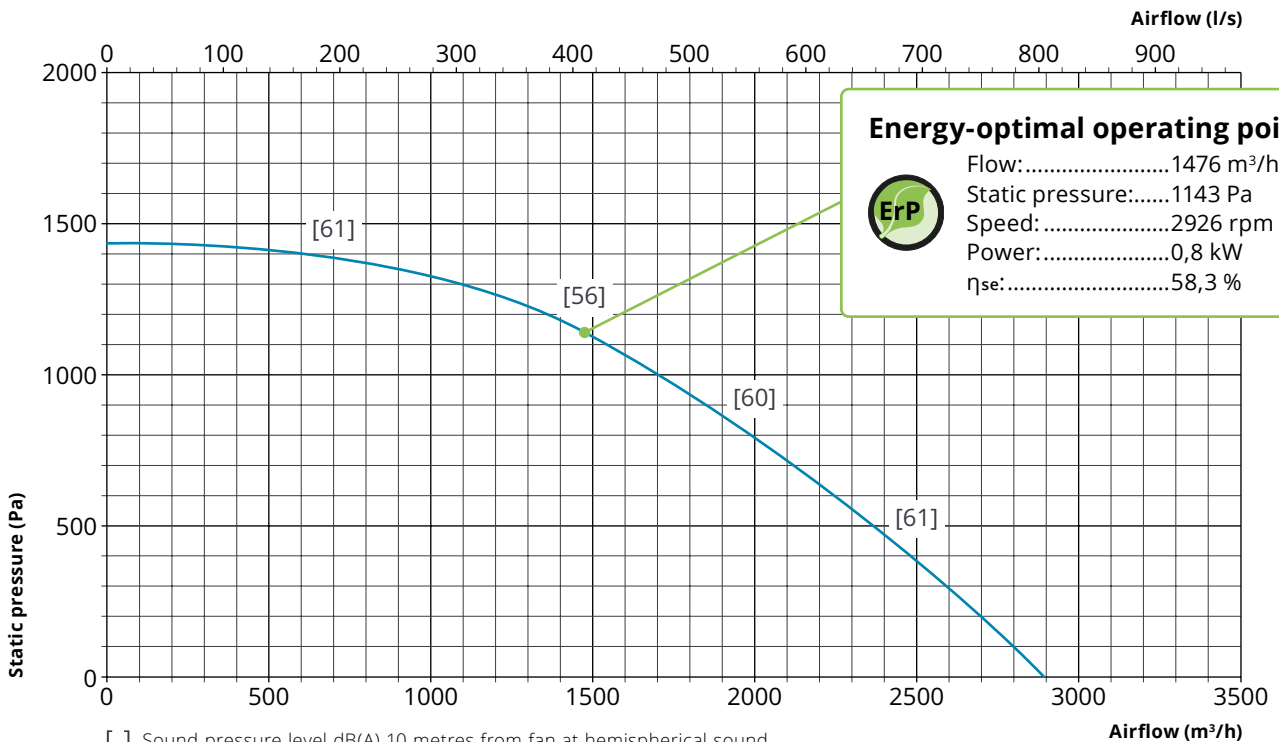
Speed: 2890 rpm

Enclosure class: IP55

Max. operating temperature:.. 80 °C

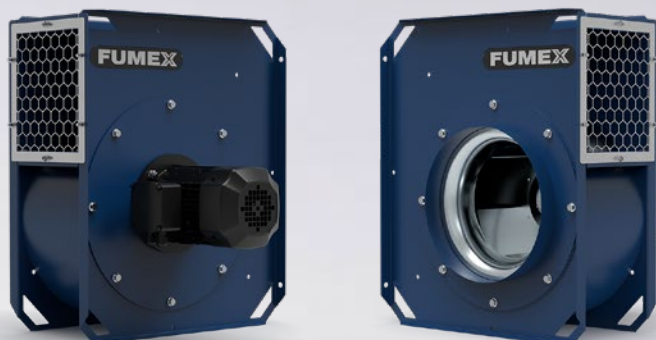
Ambient temperature:..... -20 °C to +40 °C

Sound pressure level*:..... 76 dB(A)



[] Sound pressure level dB(A) 10 metres from fan at hemispherical sound propagation in free field with ducted inlet and free-blowing outlet side.

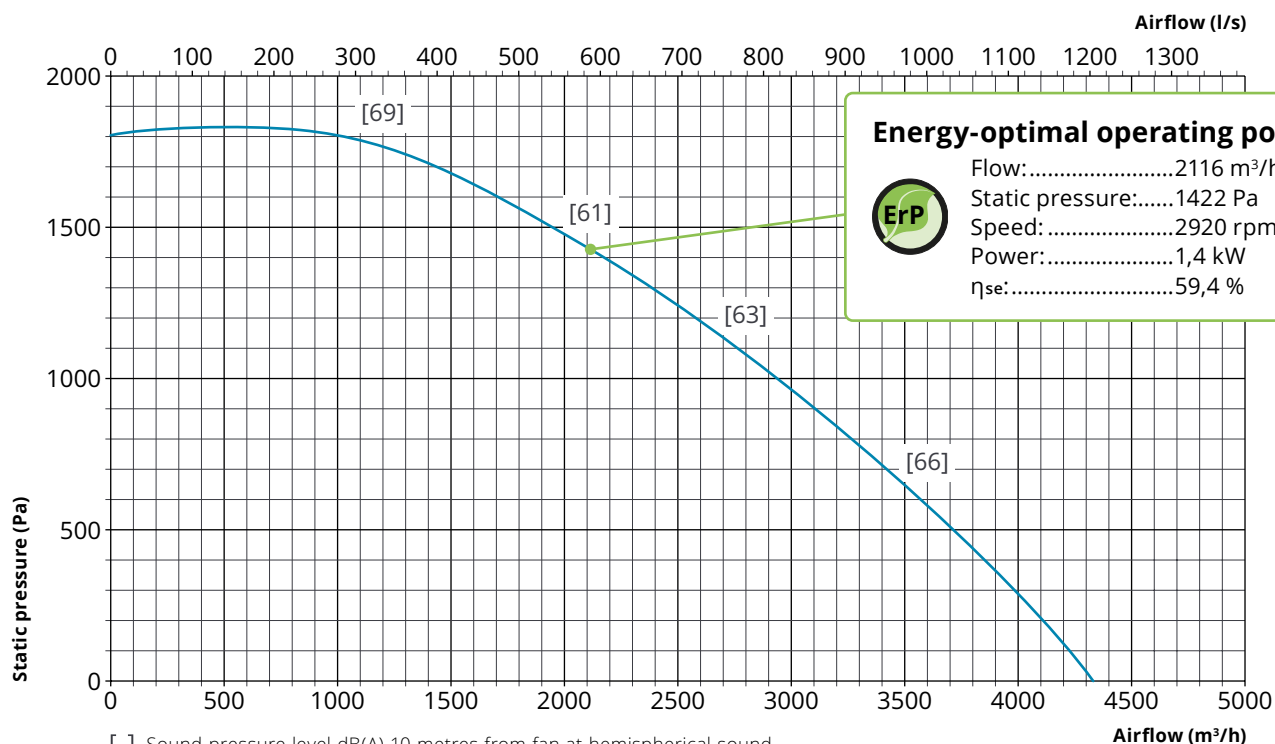
* Sound pressure level at energy-optimal operating point one meter from fan at hemispherical sound propagation in free field.



FBE 150

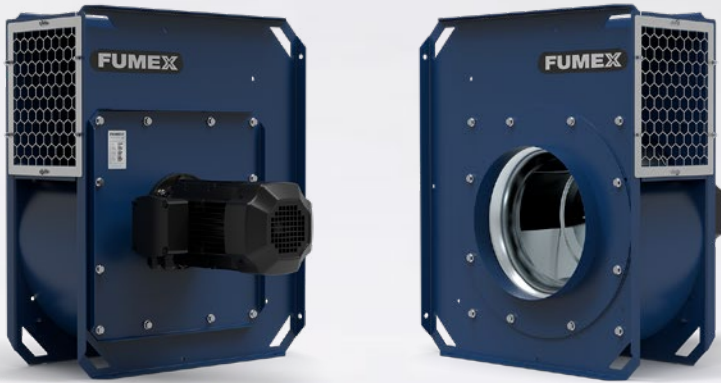
Technical data

Weight:	40 kg	Speed:	2890 rpm
Voltage:	230/400 V 3~	Enclosure class:	IP55
Frequency:.....	50 Hz	Max. operating temperature:..	80 °C
Power:	1,5 kW	Ambient temperature:.....	-20 °C to +40 °C
Rated current:.....	5,3/3,1 A	Sound pressure level*:	81 dB(A)



[] Sound pressure level dB(A) 10 metres from fan at hemispherical sound propagation in free field with ducted inlet and free-blowing outlet side.

* Sound pressure level at energy-optimal operating point one meter from fan at hemispherical sound propagation in free field.

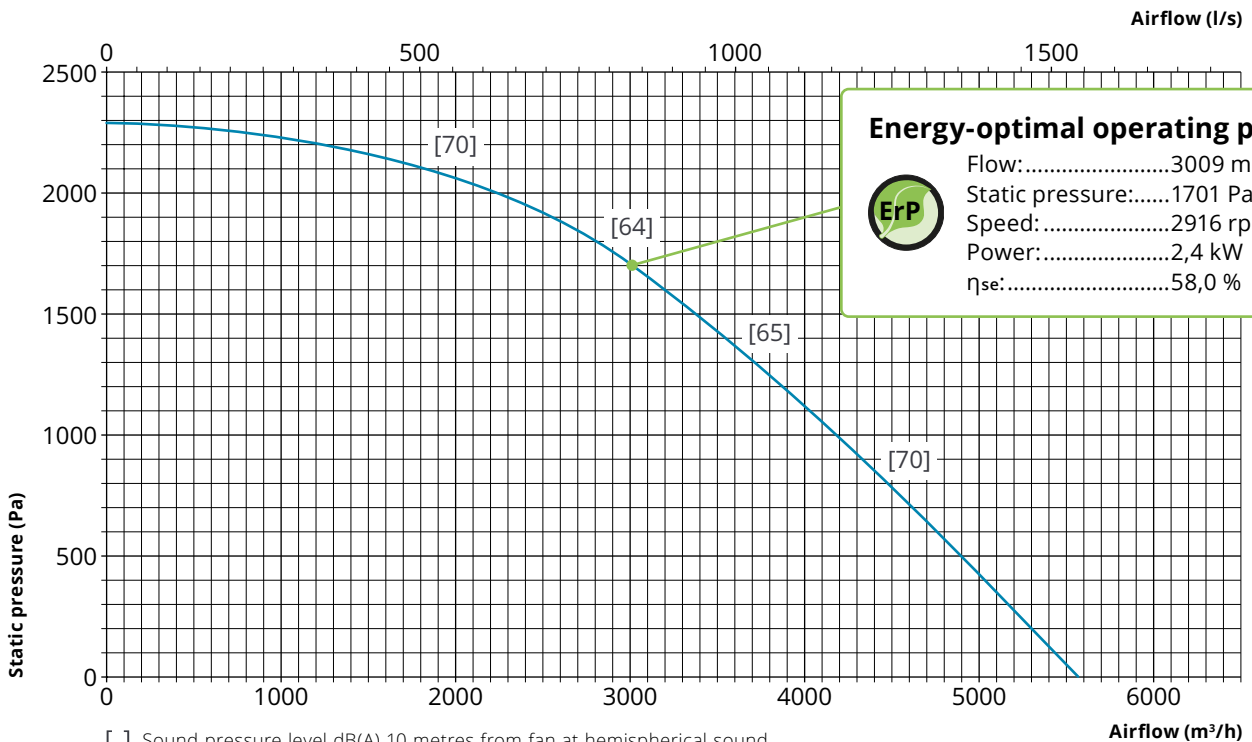


FBE 220

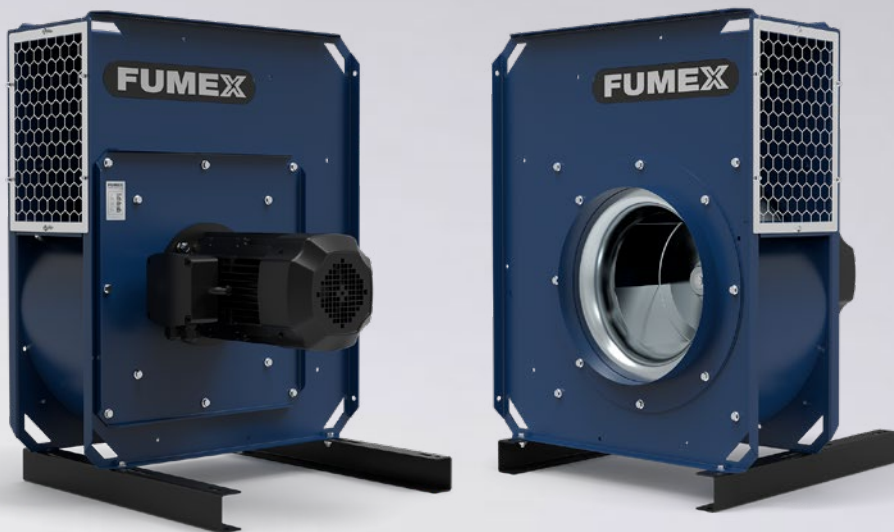
Technical data

Weight: 58 kg
 Voltage: 230/400 V 3~
 Frequency:..... 50 Hz
 Power: 2,2 kW
 Rated current:..... 7,6/4,3 A

Speed: 2890 rpm
 Enclosure class: IP55
 Max. operating temperature:.. 80 °C
 Ambient temperature:..... -20 °C to +40 °C
 Sound pressure level*:..... 84 dB(A)



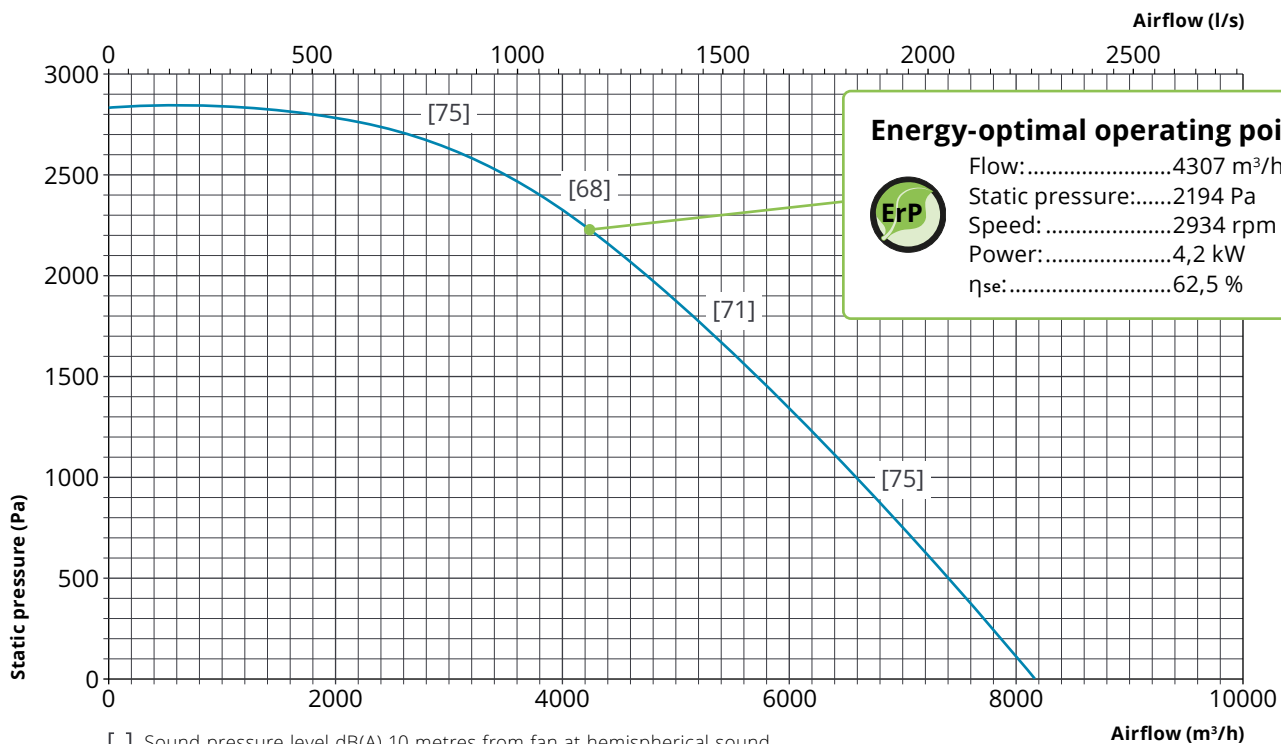
[] Sound pressure level dB(A) 10 metres from fan at hemispherical sound propagation in free field with ducted inlet and free-blowing outlet side.
 * Sound pressure level at energy-optimal operating point one meter from fan at hemispherical sound propagation in free field.



FBE 400

Technical data

Weight:	94 kg	Speed:	2910 rpm
Voltage:	400/690 V 3~	Enclosure class:	IP55
Frequency:.....	50 Hz	Max. operating temperature:..	80 °C
Power:	4,0 kW	Ambient temperature:.....	-20 °C to +40 °C
Rated current:.....	7,4/4,3 A	Sound pressure level*:	88 dB(A)



[] Sound pressure level dB(A) 10 metres from fan at hemispherical sound propagation in free field with ducted inlet and free-blowing outlet side.

* Sound pressure level at energy-optimal operating point one meter from fan at hemispherical sound propagation in free field.

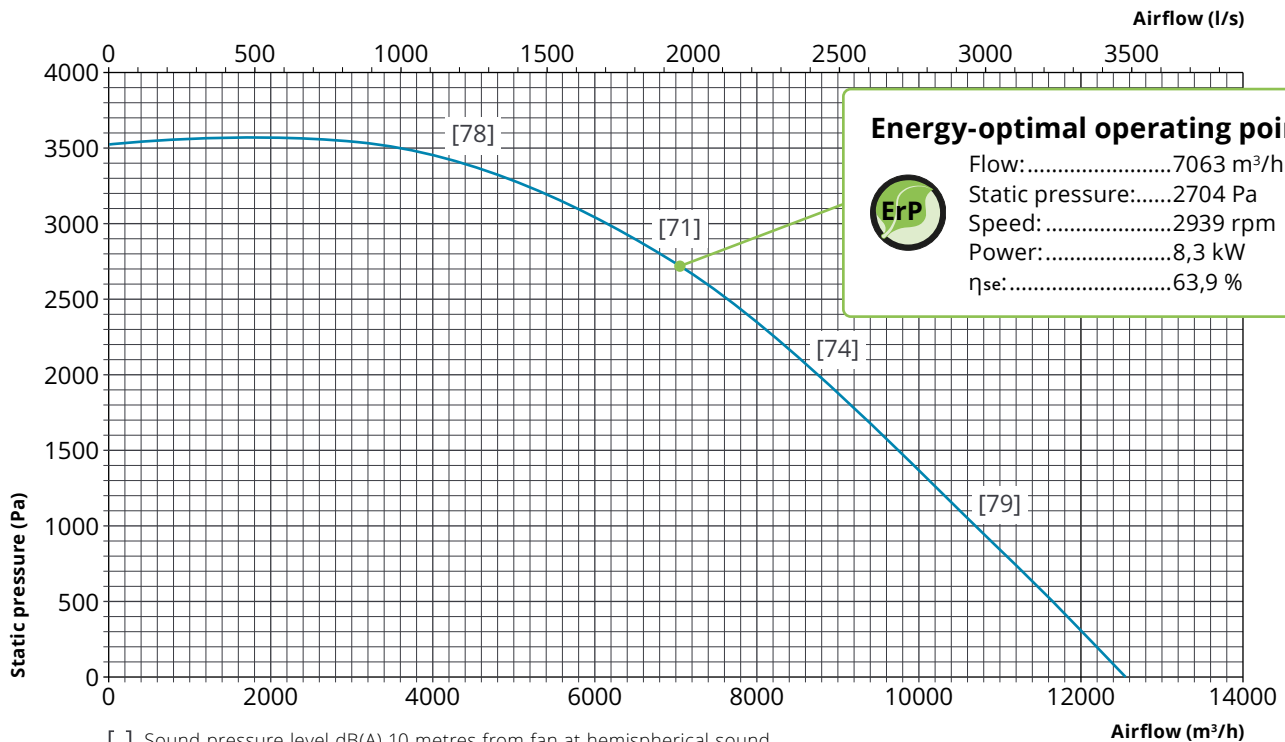


FBE 750

Technical data

Weight: 136 kg
 Voltage: 400/690 V 3~
 Frequency:..... 50 Hz
 Power: 7,5 kW
 Rated current:..... 13,5/7,8 A

Speed: 2940 rpm
 Enclosure class: IP55
 Max. operating temperature:.. 80 °C
 Ambient temperature:..... -20 °C to +40 °C
 Sound pressure level*:..... 91 dB(A)



[] Sound pressure level dB(A) 10 metres from fan at hemispherical sound propagation in free field with ducted inlet and free-blowing outlet side.
 * Sound pressure level at energy-optimal operating point one meter from fan at hemispherical sound propagation in free field.

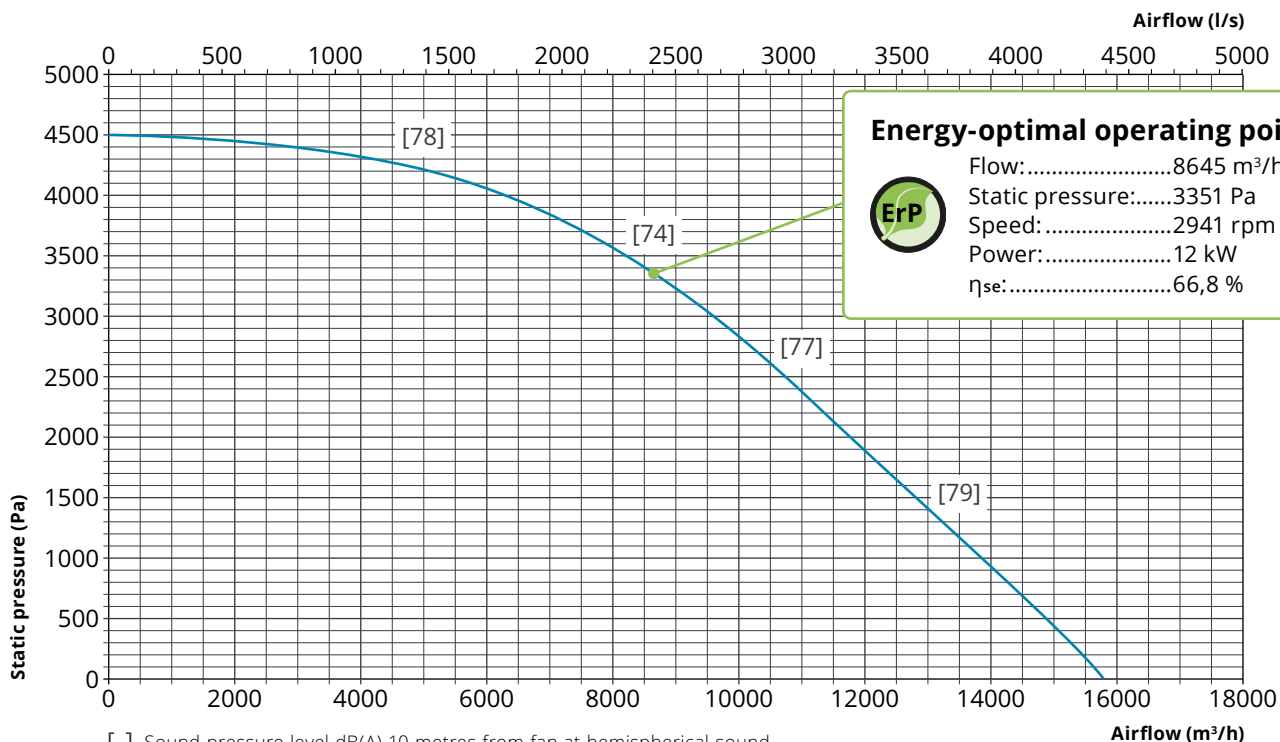


FBE 1100

Technical data

Weight: 162 kg
 Voltage: 400/690 V 3~
 Frequency:..... 50 Hz
 Power: 11,0 kW
 Rated current:..... 19,6/11,3 A

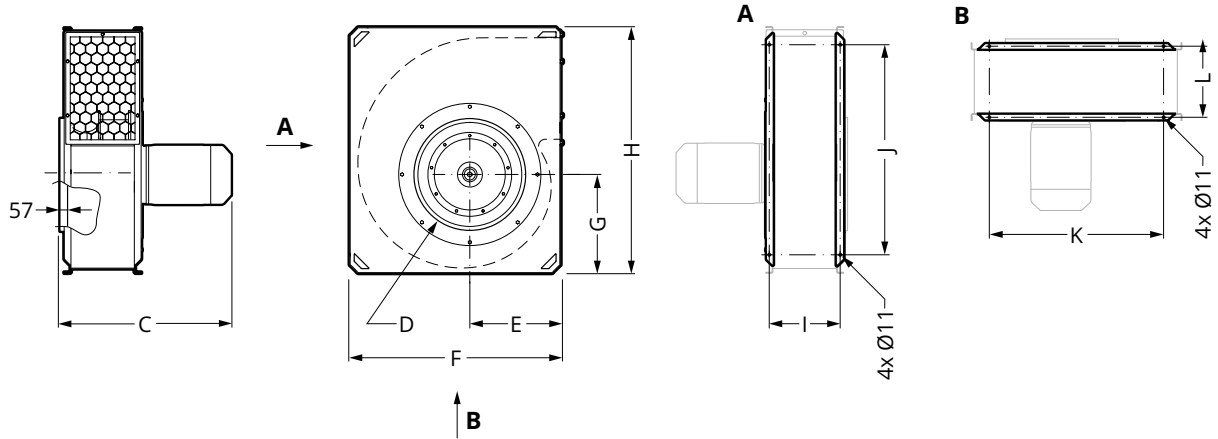
Speed: 2950 rpm
 Enclosure class: IP55
 Max. operating temperature:.. 80 °C
 Ambient temperature:..... -20 °C to +40 °C
 Sound pressure level*:..... 94 dB(A)



[] Sound pressure level dB(A) 10 metres from fan at hemispherical sound propagation in free field with ducted inlet and free-blowing outlet side.
 * Sound pressure level at energy-optimal operating point one meter from fan at hemispherical sound propagation in free field.

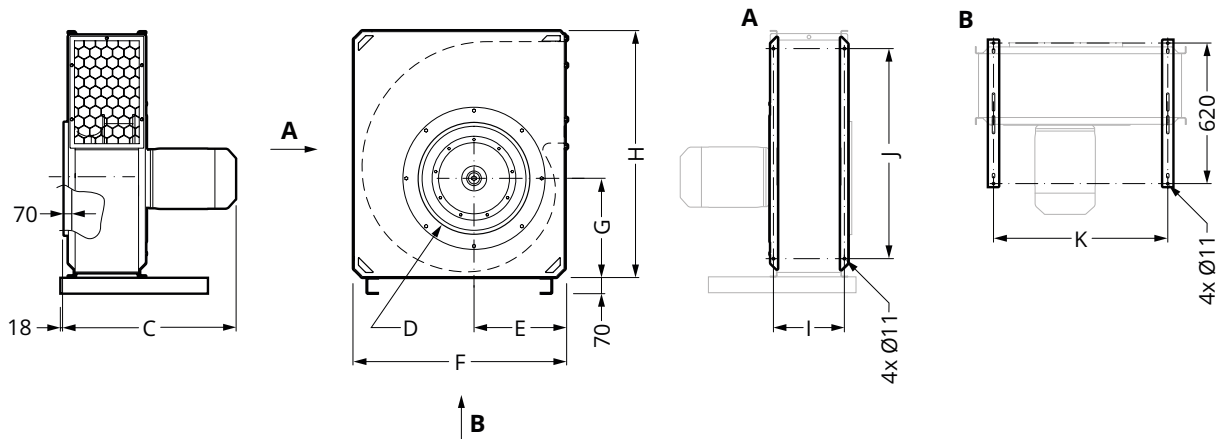
Dimensional drawing (mm)

FBE 037/075/150/220



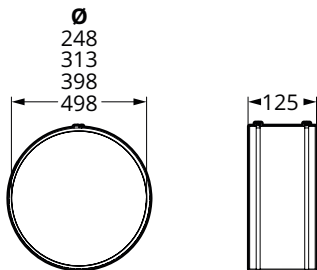
Version	Dimensions (mm)									
	C	D	E	F	G	H	I	J	K	L
FBE 037	435	Ø248	183	430	212	520	183	360	270	183
FBE 075	492	Ø248	205	475	239	580	201	420	315	201
FBE 150	526	Ø313	230	535	265	645	235	485	375	235
FBE 220	606	Ø313	258	600	301	730	245	570	440	245

FBE 400/750/1100

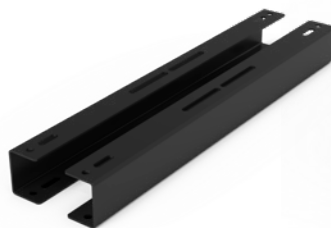
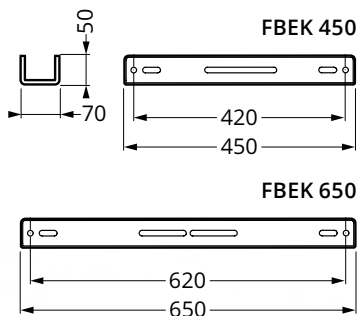


Version	Dimensions (mm)									
	C	D	E	F	G	H	I	J	K	
FBE 400	722	Ø398	297	720	249	880	267	720	560	
FBE 750	783	Ø498	330	805	385	970	310	810	645	
FBE 1100	809	Ø498	400	930	435	1085	313	925	770	

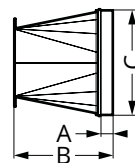
Accessories



Flexible Duct FDS
For connection to the inlet side, including 2 mounting clamps.



Mounting Rail FBEK
For easy and safe installation. (FBEK 650 included as standard on FBE 400/750/1100).



Dimensions (mm)	A	B	C
FBO 037	35	245	Ø248
FBO 075	35	245	Ø248
FBO 150	35	245	Ø313
FBO 220	35	255	Ø313
FBO 400	35	345	Ø398
FBO 750	35	445	Ø498
FBO 1100	35	445	Ø498



Transition FBO
Transition on outlet side to round connection.



Safety Switch SSB/SSB EMC
With lockable toggle. Two M25 bushings included. SSB EMC is copper-sheathed.



Contactator SKO
3-pin contactor with overcurrent relay for manual reset. The overcurrent relay has phase loss protection. Used together with external switches or control.



Motor Protection Switch SMB
3-pin motor protection switch with thermal magnetic release equipped with phase fault protection. Designed for operating and protecting fan motors.



Vibration Damper Kit FBV M10
Kit with four vibration dampers in natural rubber with hardness 60° IRH.

The right version for the right accessories
When ordering accessories for your FUMEX fan, it is important that you specify your fan model at the time of order. Talk to your dealer or directly with Fumex sales staff to ensure the best service.

To meet the requirements of the CE standard, the fan must be equipped with safety switches and overcurrent protection. For speed control, see the separate product sheet for control units.



FBE 037

FBE 075

FBE 150

FBE 220

FBE 400

FBE 750

FBE 1100

Specifications

Delivery version

The fan is delivered as standard in version LG 90. Can be adapted on installation to the customer's needs in the LG versions.



LG 0



LG 90



LG 180



LG 270

 Standardised delivery version

Surface finish

Sheet metal parts: Stainless steel, powder-coated or electro-galvanised.

Production

The FBE range of fans is manufactured in accordance with the following directives and standards:

- Machinery Directive 2006/42/EC
- EMC Directive 2014/30/EU
- EN ISO 12100:2010
- EN 60204-1
- ErP2015 2009/125/EC

EXTRACTION ARMS · VEHICLE EXHAUST EXTRACTORS · FANS · FILTERS · CURTAINS · CONTROLS

FUMEX

Verkstadsvägen 2, 93161 Skellefteå, Sweden • Tel.: +46 910-361 80 • Fax: +46 910-130 22 • E-mail: info@fumex.se
www.fumex.com